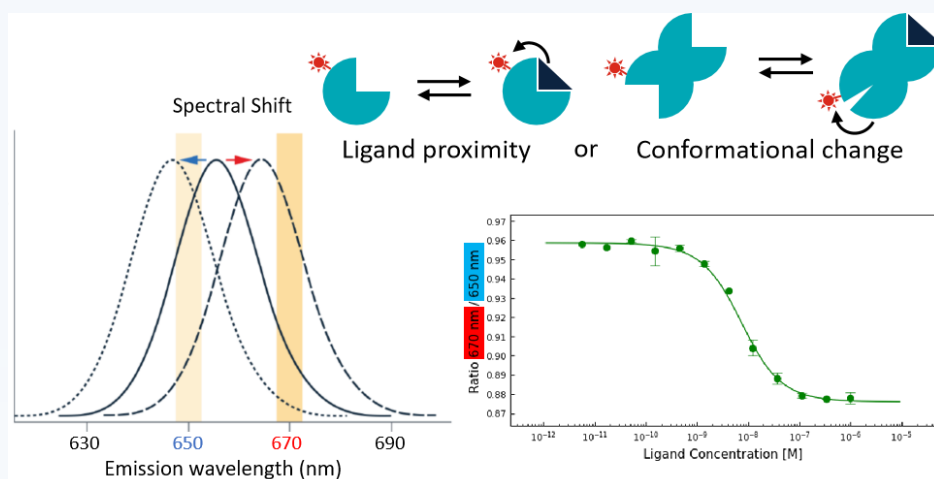


Dianthus Platform | CRBN-DDB1

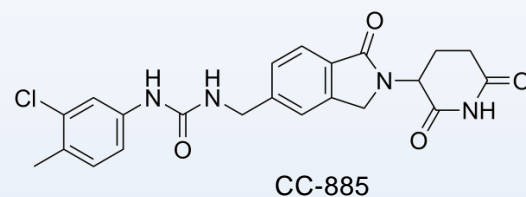
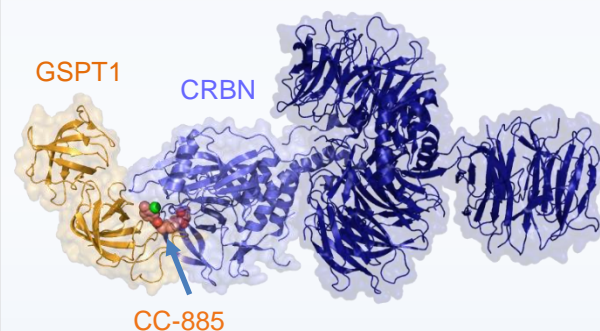
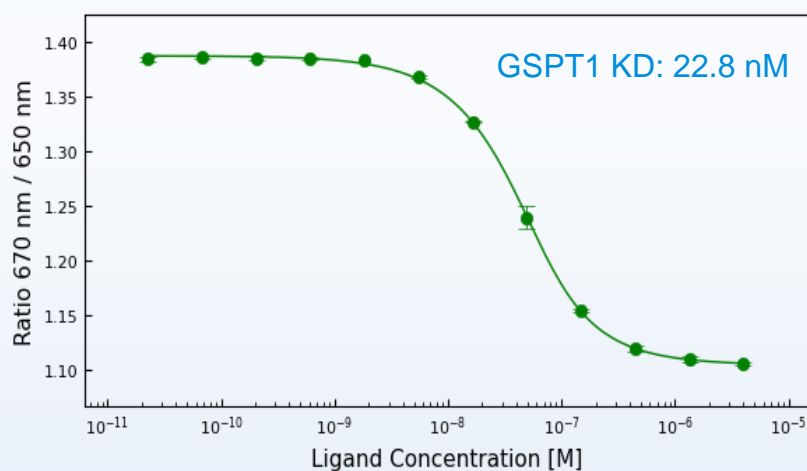
Combining Ready-To-Go Assays with Dianthus Spectral Shift Technology to Accelerate the Discovery of CRBN-DDB1 Proteolysis-Targeting Chimeras and Molecular Glues

Spectral Shift Technology



- Low sample consumption
- High throughput screening
- In solution binding affinities

Ternary Complex Formation DDB1-CRBN + CC-885 vs. GSPT1



Search for more protein info



www.wuxibiology.com



Find us via LinkedIn

Contact Us

Crelux_CR@wuxiapptec.com
BD USA: mahnaz_arjomand@wuxiapptec.com
BD EU/UK/Israel: dave_madge@wuxiapptec.com

DB_Service@wuxiapptec.com
BD China: xu_longji@wuxiapptec.com
BD Japan: fumio_ito@wuxiapptec.com
BD Korea: sycho@wuxiapptec.com